



Flute 2

Mars

from The Planets

arr. Barth

Gustav Holst

Allegro ♩ = 160

7 8 9 17 21 4

25 2

35 38 4

44 Allargando 50 2 Rall. al Fine 55

57 3

Flute 1

Saturn

arr. Barth

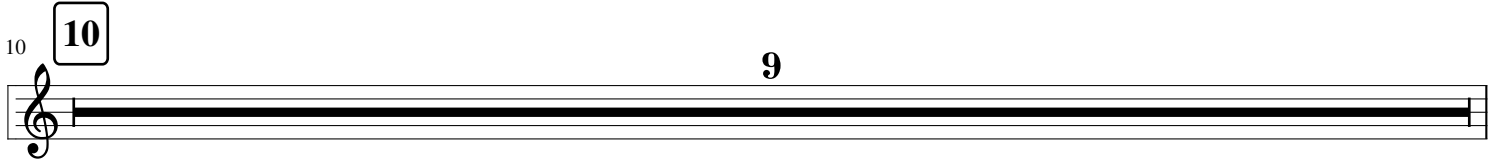
from The Planets

Gustav Holst

Adagio ♩ = 68



*p*



*f*

*ff*



*f* ————— *p*

Flute 2

Saturn

arr. Barth

from The Planets

Gustav Holst

Adagio ♩ = 68

Musical staff with notes and dynamic marking *p*. The staff contains a sequence of quarter notes in 4/4 time, starting with a quarter rest followed by a series of eighth notes.

*p*

Musical staff with measure rest 10 and dynamic marking 9. The staff shows a measure rest for 10 measures, followed by a dynamic marking of 9.

Musical staff with measure rests 19, 27, and 5, and dynamic marking *ff*. The staff shows measure rests for 19, 27, and 5 measures, with notes and dynamic marking *ff* in between.

Musical staff with measure rest 33 and dynamic markings *f* and *p*. The staff shows a measure rest for 33 measures, followed by notes with dynamic markings *f* and *p*.

Flute

# Jupiter--Summer 2017 Version

arr. Barth

from The Planets

Gustav Holst

$\text{♩} = 60$

1 *mf*

5 **5**

9 **9** 4

13 **13** 3 *f*

17 **17** More Broadly

21 **21**

Flute

# I Can Make Your Hands Clap

arr. Barth

From the film "Despicable Me 3"

E. Frederic & S. Hollander

♩ = 140

5

9

13

19

25

29

33

40

45

51

**D**

*ff*

57

61

**E**

65

69

**F**

Hand Clap

Flute 1

# Airport

Thomas Gregory (arr. Barth)

$\text{♩} = 120$

Flute

4

Fl. 15

Fl. 24



Flute 2

# Airport

Thomas Gregory (arr. Barth)

♩ = 120

4

Flute

< < < < < >>

18

Fl.

1. 2.

28

Fl.

> >

Flute

# Twinkle in A major

Flute

10  
Fl.