

Bb Cornet 1

Twinkle in A major

B $\flat$  Cornet



Musical notation for the first part of the B $\flat$  Cornet part. It consists of a single staff with a treble clef, a key signature of three sharps (F#, C#, G#), and a 4/4 time signature. The melody is a simple eighth-note scale: A4, B4, C5, D5, E5, D5, C5, B4, A4, G4, F4, E4, D4, C4, B3, A3.

9  
B $\flat$  Cnt.




Musical notation for the second part of the B $\flat$  Cnt. part, starting at measure 9. It consists of a single staff with a treble clef, a key signature of three sharps (F#, C#, G#), and a 4/4 time signature. The melody continues the scale from the previous part: G3, F3, E3, D3, C3, B2, A2, G2, F2, E2, D2, C2, B1, A1.

Bb Cornet 2

Twinkle in A major

B $\flat$  Cornet



Musical notation for the B $\flat$  Cornet part, measures 1 through 8. The key signature is A major (three sharps: F#, C#, G#) and the time signature is 4/4. The notation consists of quarter notes and eighth notes.

9  
B $\flat$  Cnt.



Musical notation for the B $\flat$  Cnt. part, measures 9 through 16. The key signature is A major (three sharps: F#, C#, G#) and the time signature is 4/4. The notation consists of quarter notes and eighth notes, ending with a double bar line.

Bb Cornet

# Airport

Thomas Gregory (arr. Barth)

$\text{♩} = 120$

B $\flat$  Cornet

4

18

B $\flat$  Cnt.

1.

27

B $\flat$  Cnt.

2.

B $\flat$  Cornet

# I Can Make Your Hands Clap

arr. Barth

From the film "Despicable Me 3"

E. Frederic & S. Hollander

$\text{♩} = 140$

1  
*p*

5

9 **A**

13

19 **B**

25

29

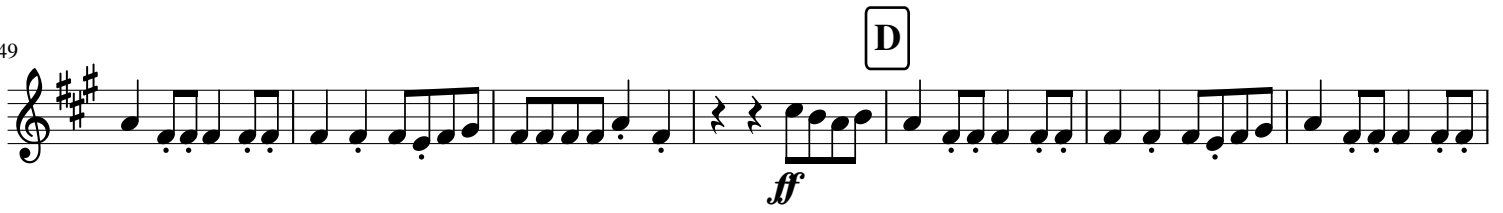
36 **C**

40

45



49



56



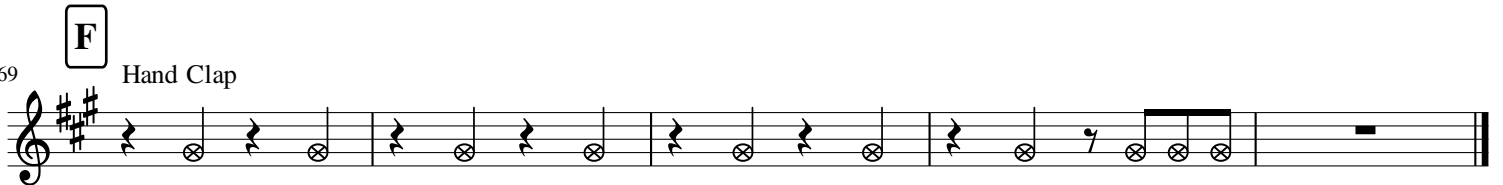
61



65



69



# B $\flat$ Cornet *Jupiter--Summer 2017 Version*

arr. Barth

from The Planets

Gustav Holst

$\text{♩} = 60$

1 *mf*

5

9 4 13 3 *f*

17 More Broadly

21

# B $\flat$ Cornet 2 *Jupiter--Summer 2017 Version*

arr. Barth

from The Planets

Gustav Holst

$\text{♩} = 60$

5

9

13

17

21

# B♭ Trumpet 1

# Mars

arr. Barth

from The Planets

Gustav Holst

Allegro ♩ = 160

2

8

17

21

25

35

38

44

50

55

*p* *mp* *mp* *cresc.* *mf* *cresc.* *mf* *cresc.* *ff* *ff* *ff*

*Allargando* *Rall. al Fine*

2 3

3



# B♭ Trumpet 2

# Mars

arr. Barth

from The Planets

Gustav Holst

Allegro ♩ = 160

7 8 2

17 21

*mp* *mp* *cresc.*

25 25

*mf* *cresc.*

34 35 38

*ff* *mf* *cresc.*

41 44 Allargando 2

*ff*

50 50 Rall. al Fine

55 55 3 3

*ff*

B $\flat$  Trumpet 1

# Saturn

arr. Barth

from The Planets

Gustav Holst

Adagio  $\text{♩} = 68$

7

*mf*

10

2

*mf*

19

2

*mf*

27

33

*ff* *p* *f* *p*

# B $\flat$ Trumpet 2

# Saturn

arr. Barth

from The Planets

Gustav Holst

Adagio  $\text{♩} = 68$

7

10

2

mf

19

2

27

27

33

ff

p

f

p